

MONTANA ALL-STATE STRING AUDITION MATERIAL

Double Bass

SET A

Revised:
22-Jan. 2020

Track 1: F Major scale

♩ = 88



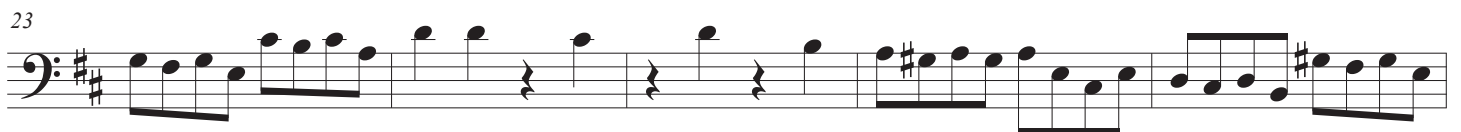
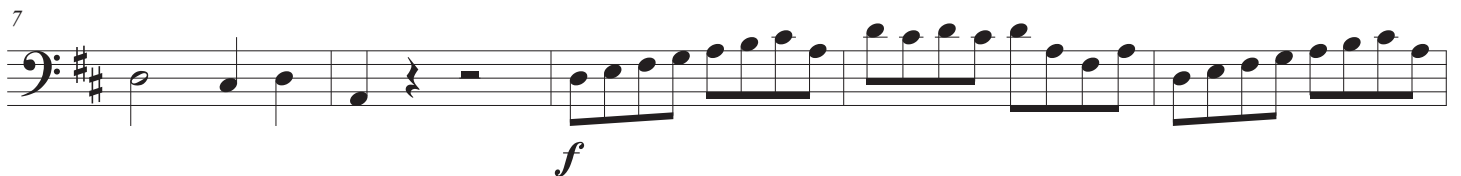
Track 2: e melodic minor scale

♩ = 72, détaché



Track 3: Mozart *Symphony No. 35*, Mvt. 4, m. 1-37

Presto ♩ = 132



28

Musical staff for measure 28, bass clef, key signature of two sharps (F# and C#). The staff contains a sequence of eighth and sixteenth notes, ending with a double bar line.

33

Musical staff for measure 33, bass clef, key signature of two sharps. The staff contains a sequence of eighth notes, with three *sf* (sforzando) markings below the staff.

Track 4: Berlioz *Symphonie Fantastique*, Mvt. 2, m. 3-36

Allegro non troppo ♩. = 60

3

Musical staff for measure 3, bass clef, key signature of two sharps, 3/8 time signature. The staff contains a sequence of eighth notes with slurs and accents. *pp* and *sf* markings are present below the staff.

11

Musical staff for measure 11, bass clef, key signature of two sharps. The staff contains a sequence of eighth notes with slurs and accents. *sf* markings are present below the staff.

20

Musical staff for measure 20, bass clef, key signature of two sharps. The staff contains a sequence of eighth notes with slurs and accents. *cresc.* and *sempre* markings are present below the staff.

28

Musical staff for measure 28, bass clef, key signature of two sharps. The staff contains a sequence of eighth notes with slurs and accents. *sempre*, *ff*, and *f* markings are present below the staff.

Track 5: Play a one-minuet excerpt from your solo literature.