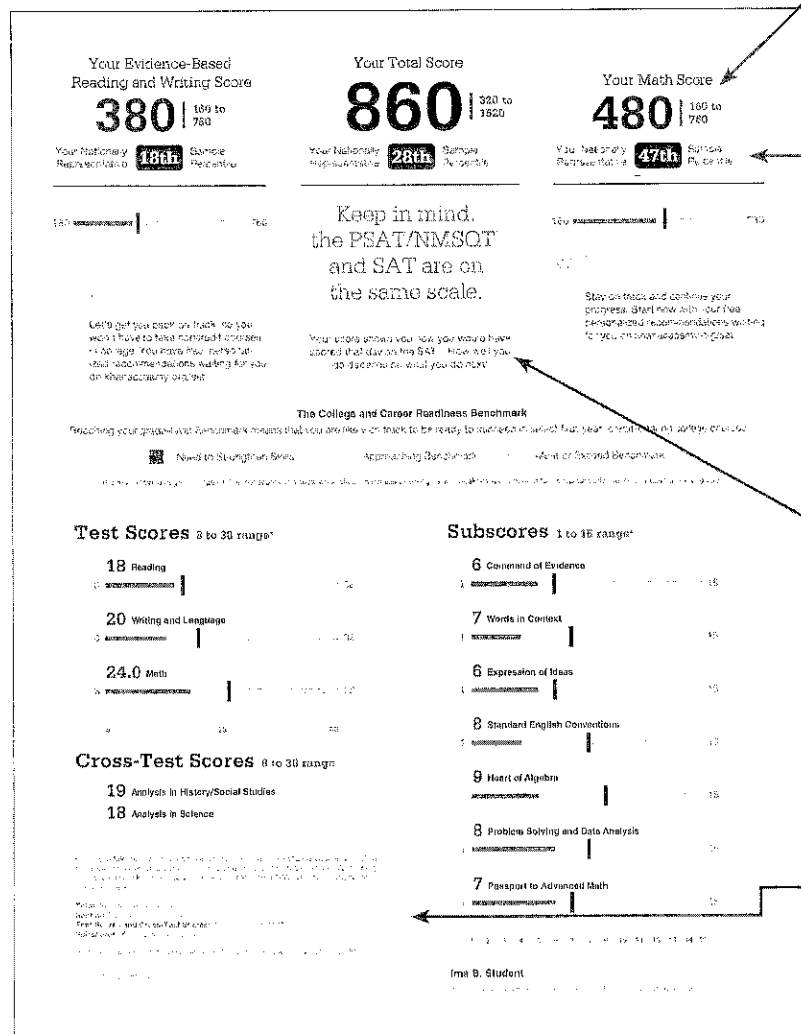


A PARENT TUTORIAL » UNDERSTANDING 2015 PSAT/NMSQT® RESULTS

A Case Study: Ima B. Student's PSAT/NMSQT® Score Report

Take a look at Ima B. Student's sample score report below and on the next page. Use the corresponding information to help you interpret your student's PSAT/NMSQT Score Report.



What Are Ima's Scores?

Ima's Evidence-Based Reading and Writing score is 380 and Math is 480. In Evidence-Based Reading and Writing, Ima's score is approaching the benchmark (explained on the report), but she is not quite on track for college readiness. In Math, however, Ima is exceeding the benchmark and is on track. Test scores, cross-test scores, and subscores can give Ima a better understanding of areas to work on.

What Are Her Score Percentiles?

Since Ima is in the 10th grade, the percentiles compare her scores with those of all 10th-graders in the nation. Ima scored as well as or better in Evidence-Based Reading and Writing than 18 percent of a nationally representative group of sophomores. In Math, she scored as well as or better than 47 percent of a nationally representative group of sophomores. Additional percentiles are available in Ima's online score report.

How Will Ima Do on the SAT®?

The PSAT/NMSQT® and SAT are scored on a common scale; therefore if Ima had taken the SAT instead of the PSAT/NMSQT on the same test date, she would have received the same score. When Ima takes the SAT, she will likely have had additional learning from school and practice. Her PSAT/NMSQT results can help Ima focus her efforts in high school to be better prepared for the SAT.

What Are Her Score Ranges?

No test measures precisely what someone knows, and many factors can affect results. That is why test makers think of each score as a range that extends from a few points below to a few points above the score earned.

National Merit Scholarship Corporation

National Merit Scholarship Corporation (NMSC) administers the National Merit Scholarship Program, an exclusive scholarship program for high-achieving students who qualify for recognition in the 2015 competition. NMSC will consider the PSAT/NMSQT® scores of students who take the test in October, November, or December. For more information, please visit www.nationalmerit.org.

Many of your responses to NMSC's "Entry Requirements" questions, developed to determine if you are eligible to participate in the program, will be used to determine if you are eligible to participate in the program.

National Merit Scholarship Corporation
Attn: Scholarship Administration
1992 Sherman Avenue, Suite 202
Bloomington, IL 61820-4687

Include your name and home address along with your high school name, address, and city/zip code number.

Your NMSC Selection Index

124*

NMSC uses a Selection Index based on PSAT/NMSQT scores as a primary criteria of students who qualify for scholarship programs. The Selection Index is calculated based on the sum of your Reading, Writing and Language, and Math Test scores.

Eligibility Information

You do not have a Selection Index score for this year's Reading, Writing and Language, and Math Test scores.

The asterisk () next to your score indicates that you are eligible to participate in the program. For more information, please visit www.nationalmerit.org.

NOTE: Students attending high school and attending college in 2015 or later must take the PSAT/NMSQT again in their 2nd year (senior) period, grades 11-12 to receive the National Merit Scholarship Program.

Entry Requirements

Information you provided on your answer sheet:

High school status: YES

Want to complete high school in an entry fall or spring semester: YES

Want to enroll in college: YES

U.S. Citizenship: NO, but I am a U.S. lawful permanent resident or have applied for permanent residence, the application for which has not been denied and I intend to become a U.S. citizen at the earliest opportunity allowed by law.

Will Ima Be Able to Enter the National Merit® Scholarship Program?

Ima has an NMSC-Selection-Index of 124, which is double the sum of her Reading (18), Writing and Language (20), and Math (24) Test scores. This index is used by National Merit Scholarship Corporation to designate students to be recognized in its National Merit Scholarship Program. Since an asterisk appears next to Ima's score, it means she does not meet entry requirements for the program. However, even if Ima met entry requirements, her score is not likely to take her further in the competition for awards. For entry requirements and information on how the competition works, see the *2015 Official Student Guide to the PSAT/NMSQT* or visit www.nationalmerit.org.

Your Scores: Next Steps

Your score indicates that you are already likely able to:

- Recognize text as needed to improve the accuracy or content appropriateness of text chosen to answer a challenging text.
- Recognize and add information or ideas to a piece of a text to support claims or points in a challenging text.
- Recognize somewhat challenging text to ensure that information is presented in the most logical order.

Reading Test

Improve your skills by focusing on your ability to:

- Recognize and add information or ideas to a piece of text to support claims or points in a challenging text.
- Use a variety of sentence structures to accomplish a rhetorical purpose such as persuading an audience.
- Recognize text as needed to improve the accuracy or content appropriateness of text chosen to answer a challenging text.

18

8 to 38

Writing and Language Test

- Draw reasonable conclusions from somewhat challenging text.
- Describe the overall structure of a somewhat challenging text.
- Identify claims and counterclaims explicitly stated in a somewhat challenging passage.

20

8 to 38

- Draw reasonable inferences and logical conclusions from challenging text.
- Analyze information presented quantitatively in such forms as graphs, tables, and charts and relate that information to information presented in somewhat challenging text.
- Determine how the selection of specific words shapes meaning and tone in a challenging passage.

Math Test

- Interpret a linear inequality in one variable with rational coefficients that represents a constraint. Select the equation of a line in the context of the situation (when a linear model is appropriate).
- Interpret slope statistics understanding and using margin of error.
- Solve and interpret a quadratic function or equation that represents a context and requires multiple steps.
- Calculate and interpret frequency distributions using tables and other representational methods.

24.0

8 to 38

- Determine how a graph may be affected by a change to its equation.
- Determine the value of a constant or coefficient for an equation with its addition or minority multiplication.
- Using a specific model, make a prediction and compare the predicted value with the actual value in the data set.
- Within a context, compare the center of two separate data sets with different spreads.
- Determine whether two events are independent given their probabilities.

Get more next steps online

studentscores.collegeboard.org



SAT Practice
Connect to FREE, world-class SAT practice online at khanacademy.org/sat



AP® and Course Work
See which AP courses may be good matches for you



Register for the SAT
Select an SAT test date and register for it now

Your Question-Level Feedback

Writing and Language				Math Test – Calculator				Math Test – No Calculator			
Question #	Correct	Your Answer	Difficulty	Question #	Correct	Your Answer	Difficulty	Question #	Correct	Your Answer	Difficulty
1	A	***	Easy	1	A	***	Easy	1	A	***	Easy
2	B	***	Easy	2	B	***	Easy	2	B	***	Easy
3	A	***	Easy	3	A	***	Easy	3	A	***	Easy
4	C	***	Easy	4	C	***	Easy	4	C	***	Easy
5	B	***	Easy	5	B	***	Easy	5	B	***	Easy
6	B	***	Easy	6	B	***	Easy	6	B	***	Easy
7	C	***	Easy	7	C	***	Easy	7	C	***	Easy
8	C	***	Easy	8	C	***	Easy	8	C	***	Easy
9	B	***	Easy	9	B	***	Easy	9	B	***	Easy
10	B	***	Easy	10	B	***	Easy	10	B	***	Easy
11	A	***	Easy	11	A	***	Easy	11	A	***	Easy
12	A	***	Easy	12	A	***	Easy	12	A	***	Easy
13	D	***	Easy	13	D	***	Easy	13	D	***	Easy
14	D	***	Easy	14	D	***	Easy	14	D	***	Easy
15	A	***	Easy	15	A	***	Easy	15	A	***	Easy
16	C	***	Easy	16	C	***	Easy	16	C	***	Easy
17	A	***	Easy	17	A	***	Easy	17	A	***	Easy
18	C	***	Easy	18	C	***	Easy	18	C	***	Easy
19	D	***	Easy	19	D	***	Easy	19	D	***	Easy
20	B	***	Easy	20	B	***	Easy	20	B	***	Easy
21	A	***	Easy	21	A	***	Easy	21	A	***	Easy
22	B	***	Easy	22	B	***	Easy	22	B	***	Easy
23	A	***	Easy	23	A	***	Easy	23	A	***	Easy
24	A	***	Easy	24	A	***	Easy	24	A	***	Easy
25	C	***	Easy	25	C	***	Easy	25	C	***	Easy
26	D	***	Easy	26	D	***	Easy	26	D	***	Easy
27	C	***	Easy	27	C	***	Easy	27	C	***	Easy
28	C	***	Easy	28	C	***	Easy	28	C	***	Easy
29	A	***	Easy	29	A	***	Easy	29	A	***	Easy
30	B	***	Easy	30	B	***	Easy	30	B	***	Easy
31	D	***	Easy	31	D	***	Easy	31	D	***	Easy
32	A	***	Easy	32	A	***	Easy	32	A	***	Easy
33	D	***	Easy	33	D	***	Easy	33	D	***	Easy
34	C	***	Easy	34	C	***	Easy	34	C	***	Easy
35	D	***	Easy	35	D	***	Easy	35	D	***	Easy
36	A	***	Easy	36	A	***	Easy	36	A	***	Easy
37	B	***	Easy	37	B	***	Easy	37	B	***	Easy
38	A	***	Easy	38	A	***	Easy	38	A	***	Easy
39	D	***	Easy	39	D	***	Easy	39	D	***	Easy
40	B	***	Easy	40	B	***	Easy	40	B	***	Easy
41	D	***	Easy	41	D	***	Easy	41	D	***	Easy
42	C	***	Easy	42	C	***	Easy	42	C	***	Easy
43	A	***	Easy	43	A	***	Easy	43	A	***	Easy
44	B	***	Easy	44	B	***	Easy	44	B	***	Easy
45	D	***	Easy	45	D	***	Easy	45	D	***	Easy
46	C	***	Easy	46	C	***	Easy	46	C	***	Easy
47	D	***	Easy	47	D	***	Easy	47	D	***	Easy

Score Report

What Are the Next Steps for Ima?

Under *Get more next steps online*, Ima is directed to studentscores.collegeboard.org to learn how to prepare for the SAT and see her potential for challenging AP® course work.

When Should Ima Take the SAT?

As a sophomore, Ima should begin planning when she will take the SAT. Most students take the SAT for the first time in their junior year. By planning now, Ima can ensure she has adequate time to practice for the SAT. She can take advantage of practice resources by visiting studentscores.collegeboard.org.

How Can Ima Learn from Her Answers?

The score report is designed to be used with the student's PSAT/NMSQT test booklet. It lists all of Ima's answers and allows her to see the correct answer and difficulty level for each question. Ima can use her online score report to review the questions she answered incorrectly or omitted, and see detailed answer explanations explaining why her responses were correct or incorrect.

Score Report